

Microwave antenna

AL2-11/MER

ALCOMA

Microwave antenna description

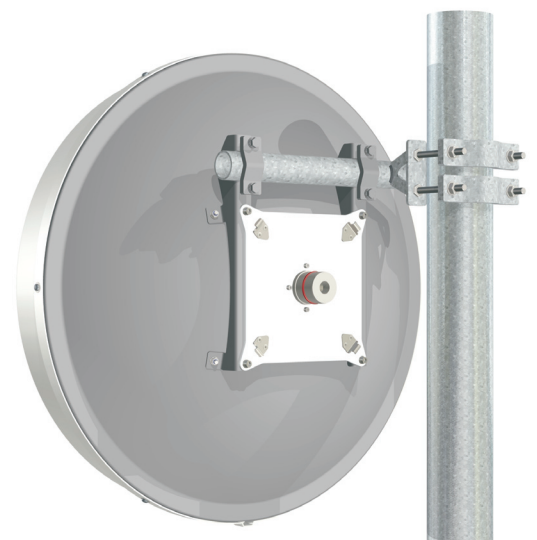
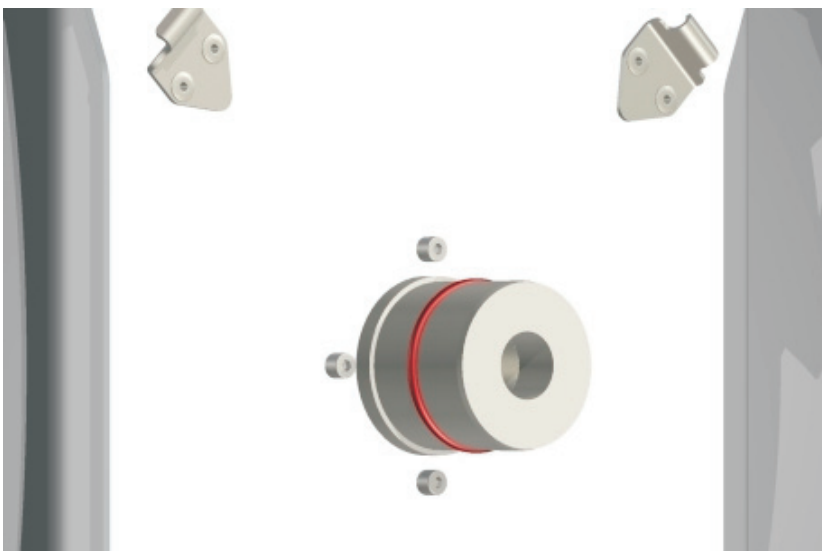
High Performance 0.65 m antenna for point to point links.

General parameters

Diameter	0.65 m (2 ft.)
Feeder	single polarized
Input flange standard	circular, hole diameter 19.05 mm
- optional	IEC R100 (WR90)
Polarization	horizontal / vertical
Environmental temperature	-45 °C ÷ +55 °C
Color	gray
Radom material	plastic
Radom color	white

Electrical parameters

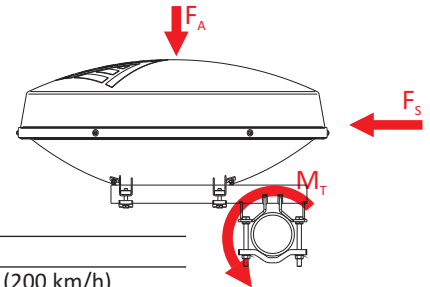
Frequency band	10.700 - 11.700 GHz
Gain mid band	35.0 dBi
3dB - BW	3.1° (H/ V)
Return loss	> 1.2 (20 dB)
F/B ratio	54 dB
XPD	28 dB
Class	2 or 3 (ETSI EN 302 217)



Microwave antenna AL2-11/MER

Mechanical parameters

Performance stability	up to 30 m/s (110 km/h)
Survival	up to 55 m/s (200 km/h)
Net weight	9.1 kg
Pipe diameter	40 - 115 mm
Adjust Azimuth	$\pm 180^\circ$
Adjust Elevation	$\pm 25^\circ$



Forces and twisting moment due wind and ice

Wind velocity	30 m/s (110 km/h)	55 m/s (200 km/h)
F_a - axial force	290 N	965 N
F_s - side force	85 N	410 N
M_t - twisting moment	70 Nm	230 Nm
Vertical load due to radial ice 25 mm (ice density 7kN/m ³)		190 N

Outlines

