



ALxxF MP300

Wireless Ethernet solution

Main features

- Frequency bands 4, 5, 6, 7, 8, 10, 11, 13, 17 and 24 GHz
- Channel bandwidth 3.5 to 112 MHz
- Modulation scheme QPSK to 1024 QAM
- Transmission capacity up to 460 Mbps full duplex
- Gigabit Ethernet interface, 1× electric
- Low latency < 0.14 ms for 460 Mbps
- Hitless adaptive coding and modulation (ACM)
- Automatic transmit power control (ATPC)
- Built-in spectrum analyzer
- Full overvoltage protection
- All Outdoor design

Ethernet features

- Fully transparent single port L2 bridge

Management system

- Proprietary network management system
- Independent diagnostic channel
- SNMP protocol
- Built-in graphs and statistics

Typical applications

- LAN/MAN/WAN
- B2B connections
- Multimedia applications
- Last miles

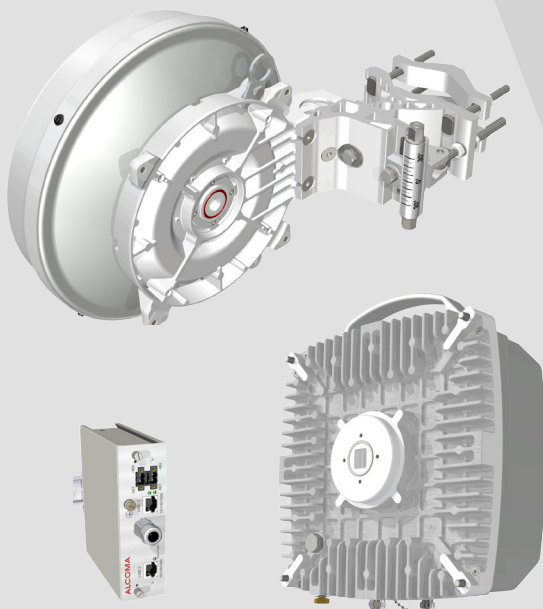


ALxxF MP300 Wireless Ethernet solution

General	4 GHz	5 GHz	6 GHz	7 GHz	8 GHz	10 GHz	11 GHz	13 GHz	17 GHz	24 GHz
Operating frequency range (GHz)	3.4–4.2	4.4–5.875	5.85–7.125	7.11–7.9	7.725–8.5	10.0–10.68	10.7–11.7	12.75–13.25	17.1–17.3	24.0–24.25
TX/RX spacing (MHz)	100–320	150–312	150–340	154–245	119–311	91/168/350	490/500/530	266	110–190	134–240
Channel spacing (MHz)	3.5–112	3.5–112	3.5–112	3.5–112	3.5–112	3.5–56	3.5–112	3.5–112	3.5–80	3.5–112
Capacity full duplex (Mbps)	5–460	5–460	5–460	5–460	5–460	5–460	5–460	5–460	5–459	5–460
Capacity for MTU 64 B (Mbps)	5–530									
Latency (ms)	< 0.14 for 460 Mbps									
Modulation	QPSK/8/16/32/64/128/256/512/1024 QAM									
Frequency stability	< 10 ppm									
Forward error correction	Reed-Solomon FEC and convolutional interleaver									
System configurations	1+0									
Radio										
TX power max. (dBm)	23	18	23	23	23	3/9	24	24	12*	5*
ATPC	Yes									
ACM	Hitless ACM with possibility of asymmetric operation									
Interfaces										
	1x 1000Base-T									
Management										
	In-band management, Ethernet interface/RS-232, Advanced management system ASD/SNMP v1									
Ethernet										
	Fully transparent single port L2 bridge, MTU 2048 B									
Antennas										
0.35 m mid band gain (dBi)	-	-	-	-	-	29	29	30	32.5	35.5
0.65 m mid band gain (dBi)	-	-	29.5	30.5	31.5	34	34.5	35.5	38	41
0.9 m mid band gain (dBi)	-	-	33	34	35	37	38	39	41.5	44
1.2 m mid band gain (dBi)	-	-	35	36	37	39.5	40	41	43.5	46
Class	RPE Class 2 or Class 3									
Polarization	V/H	V/H	V/H	V/H	V/H	V/H	V/H	V/H	Dual	Dual
Large diameter antennas	Other producers, possible waveguide connection									
Power supply and cabling										
Range (V)	48 DC (36 up to 72), floating ground									
Power consumption (W)	35	35	35	37	37	22	35	35	25	27
ODU connection	S-STP/S-FTP Cat. 7 cable up to 100 m length									
Operating temperature										
ODU (°C)	-35 up to +55									
Protected terminal box (°C)	-25 up to +55									
ODU / Terminal box dimensions and weight										
Width x Height x Depth (cm)	From 25.5 x 30.1 x 13.3 to 25.5 x 30.9 x 17.5 / 14.7 x 16.3 x 4.4									
Weight (kg)	From 5.1 to 6.7 / 0.5									

*SRD 20 dBm EIRP

For more technical information please see www.al-wireless.com.



AL Wireless a.s.
Sokolská 1605/66, Nové Město
120 00 Praha 2
Czech Republic

phone: +420 228 226 500
e-mail: info@al-wireless.com
web: www.al-wireless.com